

# V9251

## VERY EASY/TRÈS FACILE

**MISSES' DRESS:** Fitted dress has side ties, sleeve and length variations, and uneven hemline: wrong side of fabric will show.

Combinations: **B5**(8-10-12-14-16), **F5**(16-18-20-22-24)

**FABRICS:** Rayon Challis, Crepe de Chine, Lightweight Jersey. Unsuitable for obvious diagonals.

\*With Nap. \*\*Without Nap.

SIZES	8	10	12	14	16	18	20	22	24
<b>A</b> 45**/**	3¼	3¾	3¾	3¾	3¾	3¾	4	4½	4½
60**/**	2¾	2¾	2¾	2¾	2¾	2¾	3¼	3¼	3¾
<b>B</b> 45**/**	4¾	4½	4½	4¾	4¾	4¾	5¾	5¾	5¾
60**/**	3¾	3¼	3¼	3¾	3½	3¾	3¾	3¾	3¾

**LINING A, B** - 45" - ¾ yd.

**NOTIONS: A, B:** One Package of ½" Single Fold Bias Tape and Seam Binding.

### FINISHED GARMENT MEASUREMENTS

Back length from base of neck

<b>A</b>	47¾	48	48¼	48½	48¾	49	49¼	49½	49¾
<b>B</b>	57¾	58	58¼	58½	58¾	59	59¼	59½	59¾

**ROBE (J. femme):** Robe ajustée à attaches latérales, variations de manche et de longueur, et ligne d'ourlet irrégulière: l'avers du tissu sera visible.

Séries: **B5**(8-10-12-14-16), **F5**(16-18-20-22-24)

**TISSUS:** Etamine de rayonne, Crêpe de Chine, Jersey léger. Grandes diagonales ne conviennent pas.

\*Avec Sens. \*\*Sans Sens.

TAILLES	8	10	12	14	16	18	20	22	24
<b>A</b> 115cm**/**	3.0	3.1	3.1	3.1	3.6	3.6	3.7	3.8	3.9
150cm**/**	2.6	2.6	2.6	2.6	2.7	2.7	3.0	3.0	3.1
<b>B</b> 115cm**/**	4.0	4.2	4.2	4.3	4.4	4.4	5.0	5.0	5.0
150cm**/**	2.9	3.0	3.0	3.1	3.2	3.4	3.6	3.6	3.6

**DOUBLURE A, B** - 115cm - 0.6m

**MERCERIE: A, B:** 1 Paquet de ruban de biais simple de 1.3cm et extra-fort.

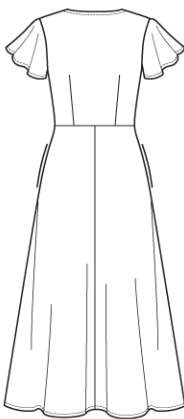
### MESURES DU VÊTEMENT FINI

Longueur - dos, votre nuque à l'ourlet

<b>A</b>	121	122	123	123	124	124	125	126	126
<b>B</b>	147	147	148	149	149	150	150	151	152



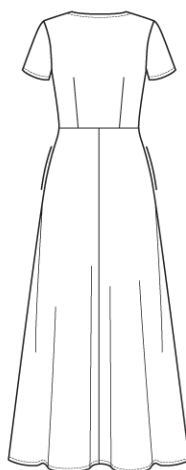
**A**



**A**



**B**



**B**

